



C20-M-307

7262

BOARD DIPLOMA EXAMINATION, (C-20)

FEBRUARY/MARCH — 2022

DME - THIRD SEMESTER EXAMINATION

MACHINE DRAWING

Time : 3 hours]

[Total Marks : 60

PART—A

- Instructions :** (1) Answer **all** questions.
(2) Each question carries **five** marks.
(3) All dimensions are given in mm.

1. Draw the following screw thread profiles with standard proportions :
(a) Metric thread 2½
(b) ACME thread 2½
2. Draw front view and top view of double riveted chain lap joint for joining plates of thickness 9 mm. Take standard proportions. 2+3
3. Draw the following weld symbols : 1×5=5
(a) Convex double V-butt weld
(b) Slot weld
(c) Single U-butt weld
(d) Seam weld
(e) Single V-butt weld with broad root face
4. Draw the following pipe fitting symbols : 1×5=5
(a) Coupling
(b) 90° Elbow turned down
(c) Globe valve
(d) Lateral
(e) Tee

PART—B

40×1=40

Instructions : (1) Answer *any one* question.

(2) All dimensions are given in mm and choose suitable scale.

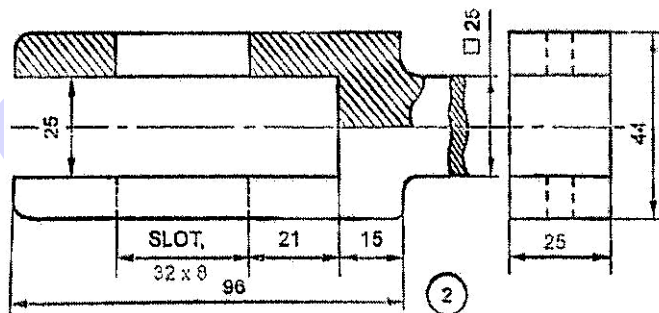
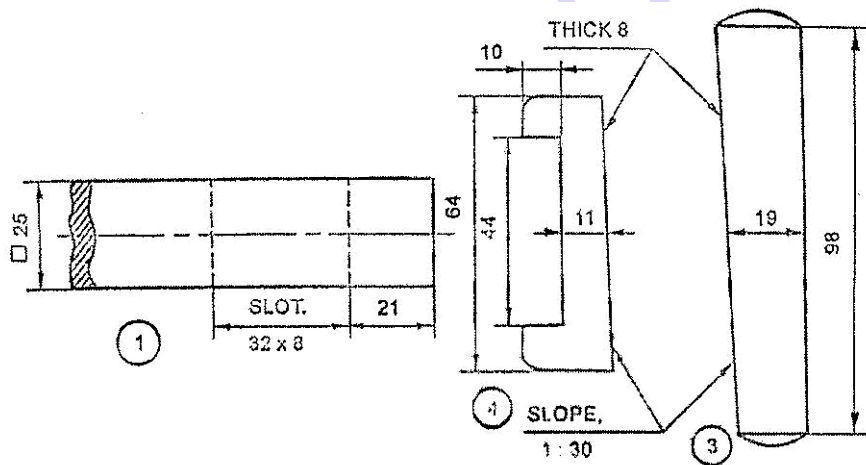
(3) Assume missing dimensions suitably.

5. Assemble the parts of Gib and Cotter joint by using the part drawing given in the figure below and draw the following :

(a) Half sectional front view with top half in section 20

(b) Top view 15

(c) Dimensioning 5



Parts list

No.	Name	Matl	Qty
1	Rod end	MS	1
2	Fork end	MS	1
3	Cotter	FS	1
4	Gib	FS	1

COTTER JOINT WITH A GIB

6. Assemble the parts of eccentric by using the part drawing given in the figure below and draw the following :

(a) Full sectional front view

25

(b) Left side view

10

(c) Dimensioning

5

