



C16-M-306

6247

BOARD DIPLOMA EXAMINATION, (C-16)

MARCH/APRIL—2018

DME—THIRD SEMESTER EXAMINATION

MACHINE DRAWING

Time : 3 hours ]

Total Marks : 60

PART—A

5×4=20

- Instructions** : (1) Answer **all** questions.  
(2) Each question carries **five** marks.  
(3) All dimensions are in mm.  
(4) Choose suitable scale

1. Sketch the following thread profiles and label in terms of pitch :  
 $2\frac{1}{2}+2\frac{1}{2}=5$   
(a) Acme thread  
(b) Knuckle thread
2. Draw the front and top view of a double-riveted chain lap joint and the thickness of each plate to be joined is 9 mm.  
 $2\frac{1}{2}+2\frac{1}{2}=5$
3. Draw the following weld symbols :  
 $1\times 5=5$   
(a) Square butt weld  
(b) Concave fillet weld  
(c) Spot weld  
(d) Plug weld  
(e) Single-bevel butt weld
4. Draw the symbols for the following pipe fittings (single line) :  $1\times 5=5$   
(a) Coupling  
(b) Plug  
(c) Tee  
(d) Union  
(e) Cross

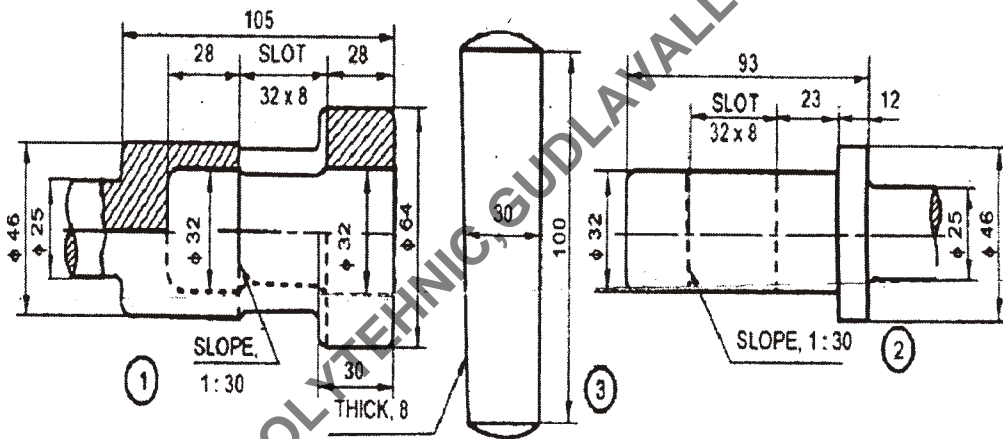
**PART—B**

40

- Instructions :** (1) Answer *any one* questions.  
 (2) Each question carries **forty** marks.  
 (3) All dimensions are in mm.  
 (4) Choose suitable scale.  
 (5) Assume missing dimensions suitably.

**5.** Draw the front and side view of the socket and Spigot joint in assembly, the details of which are given below :

- (a) Front view 20  
 (b) Side view 15  
 (c) Dimension 5



Parts list

No.	Name	Matl	Qty
1	Socket end	MS	1
2	Spigot end	MS	1
3	Cotter	HCS	1

6. Assemble the parts of foot step bearing, shown below and draw the following views :

(a) Sectional front

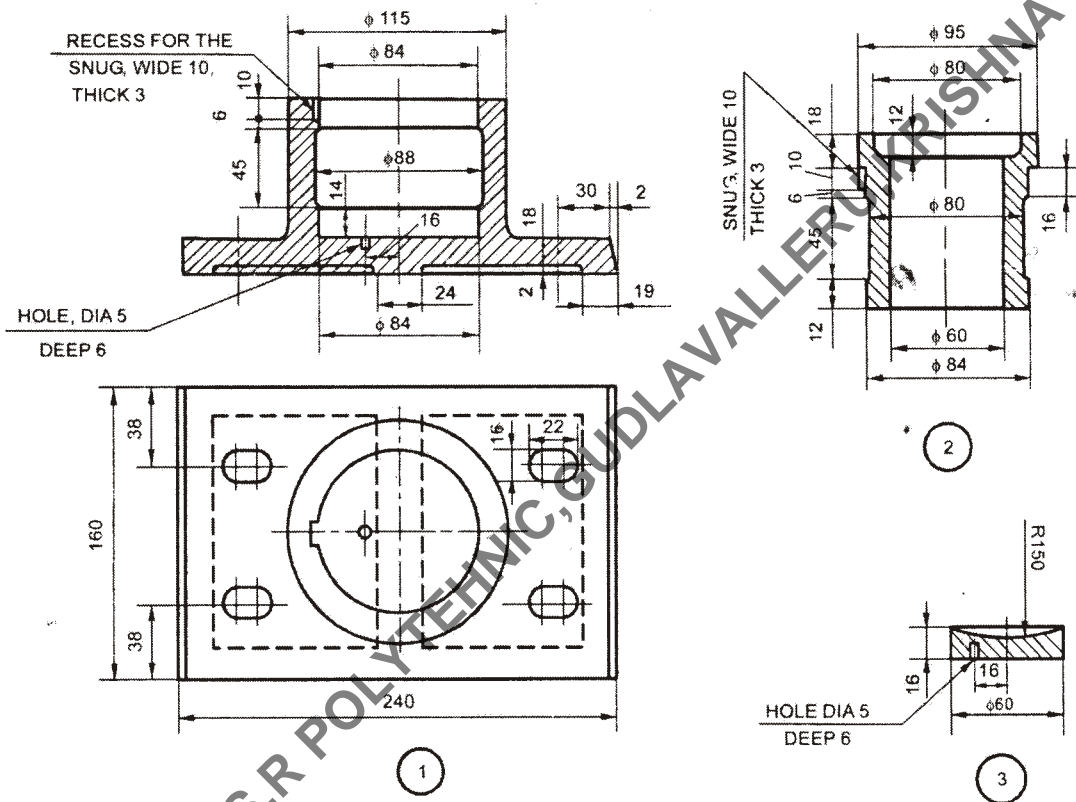
20

(b) Top view

15

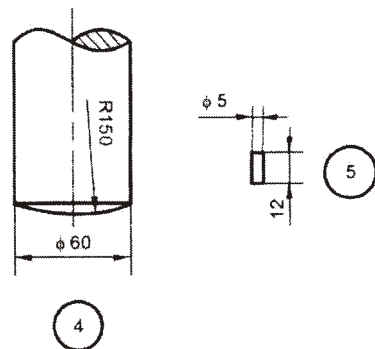
(c) Dimension

5



Parts List

No.	Name	Material	Qty
1	Body	Cast Iron	1
2	Bush	Brass	1
3	Disc	P Bronze	1
4	Shaft	Mild Steel	1
5	Pin	Mild Steel	1



\*\*\*