



C14-M-307

4255

BOARD DIPLOMA EXAMINATION, (C-14)

OCT/NOV—2015

DME—THIRD SEMESTER EXAMINATION

MACHINE DRAWING PRACTICE

Time : 3 hours]

[Total Marks : 60

PART—A

5×4=20

Instructions : (1) Answer **all** questions.

(2) Each question carries **five** marks.

(3) All dimensions are in mm.

1. Draw the following thread profiles with proportions :

(a) ACME

(b) Worm

2. Draw the following form of nuts with standard proportions :

(a) Ring nut

(b) Wing nut

3. Draw the single-line symbols for the following pipe fittings :

(a) Coupling

(b) Cap

*

- (c) Gate valve
- (d) Check valve
- (e) Union

4. Draw the welded symbols for the following type welds :

- (a) Spot weld
- (b) Single U butt weld
- (c) Seam weld
- (d) Single bevel butt weld
- (e) Plug weld

PART—B

40

Instructions : (1) Answer *any one* question.

(2) All dimensions are in mm.

(3) Assume suitable dimensions if not given in part drawings.

5. Fig. 1 shows details of a stuffing box 65 mm diameter shaft. Assemble all the parts and draw the following views of the assembly to full scale :

- (a) Elevation—full in section 19+5 for dimensioning
- (b) Plan—full in section 9+3 for dimensioning
- (c) Prepare material list 4

*

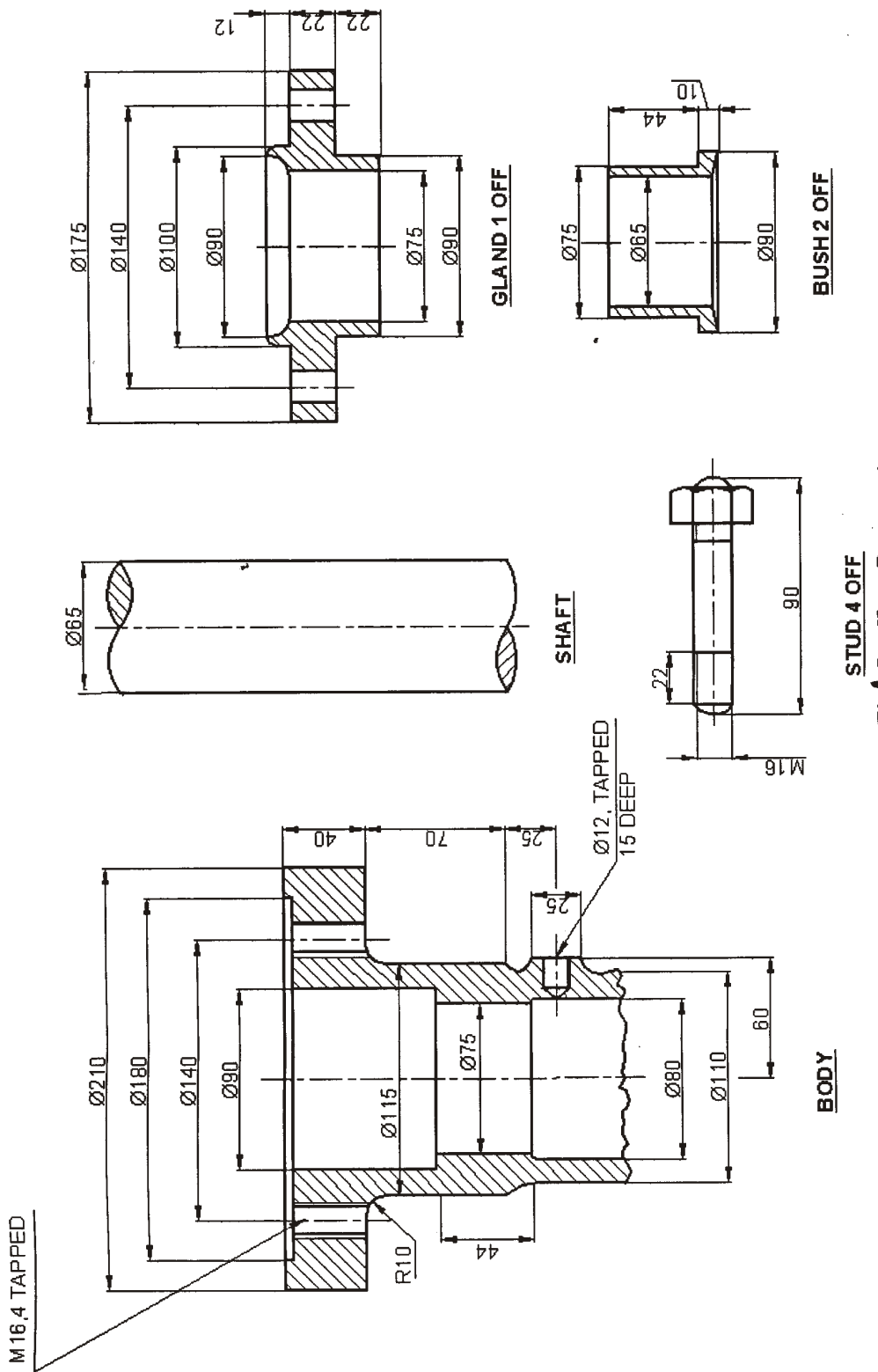


Fig. 1 : Stuffing box parts

6. Fig. 2 shows details of connecting rod of petrol engine. Assemble all the parts and draw the following views of the assembly to full scale :

- (a) Elevation—full in section 19+5 for dimensioning
- (b) Plan—full in section 9+3 for dimensioning
- (c) Prepare material list 4

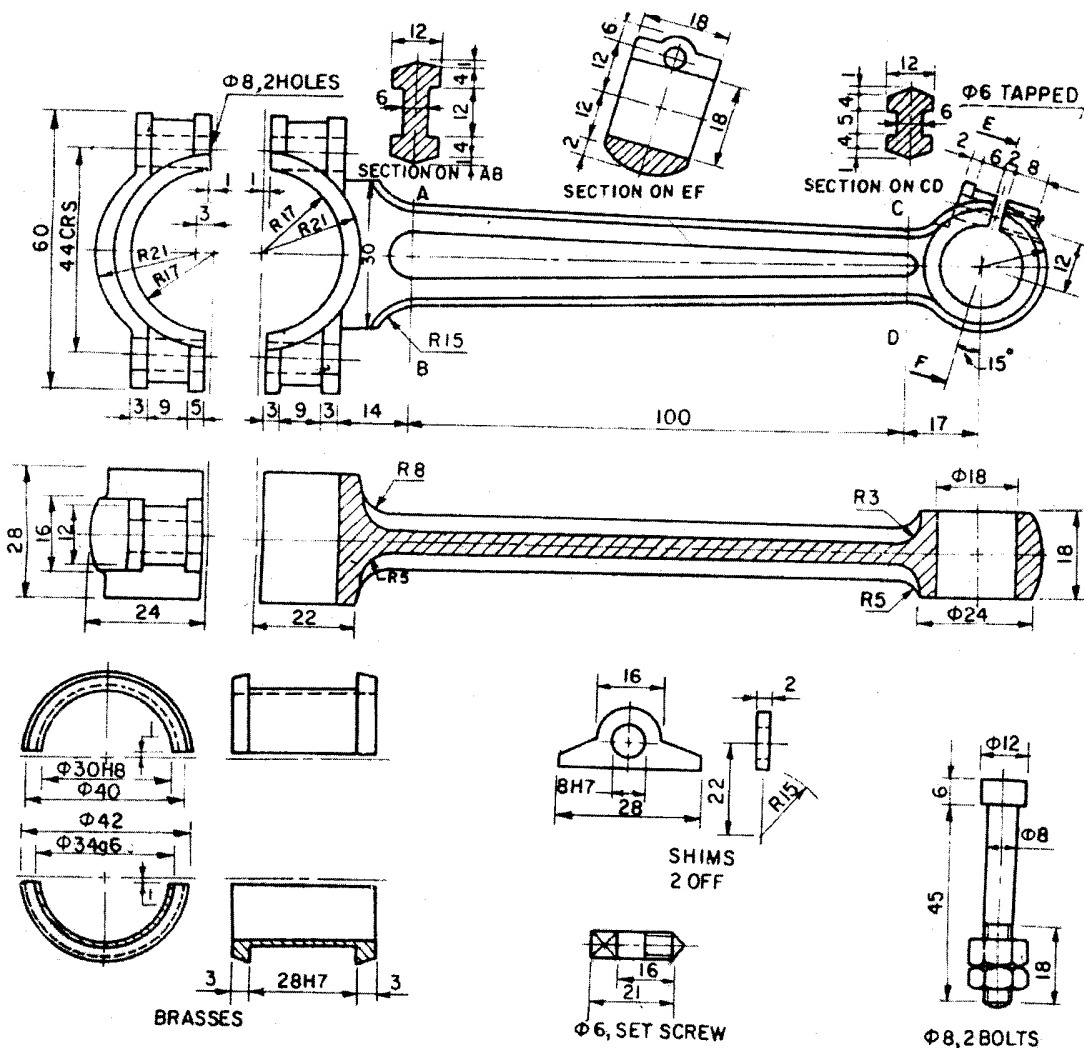


Fig. 2 : Parts of connecting rod of petrol engine
