



C09-M-307/C09-MET-307

3251

BOARD DIPLOMA EXAMINATION, (C-09)
MARCH/APRIL—2017
DME—THIRD SEMESTER EXAMINATION
MACHINE DRAWING

Time : 3 hours]

[*Total Marks* : 60

PART—A

5×4=20

- Instructions** : (1) Answer **all** questions.
(2) Each question carries **five** marks.
(3) Answer should be neat and clear with all the necessary dimensions.
(4) All dimensions are in mm.

1. Draw two views of a hexagonal headed bolt.
2. Draw two views of double riveted chain lap joint.
3. Draw the single-line symbols for the following pipe fittings :
 - (a) Cap
 - (b) Tee
 - (c) 90° elbow
 - (d) Lateral
 - (e) Gate valve

4. Draw the following weld symbols :
- Single V-butt weld
 - Single bevel butt weld with broad root face
 - Backing weld
 - Spot weld
 - Convex double V-butt weld

PART—B

40

Instructions : (1) Answer *any one* question.

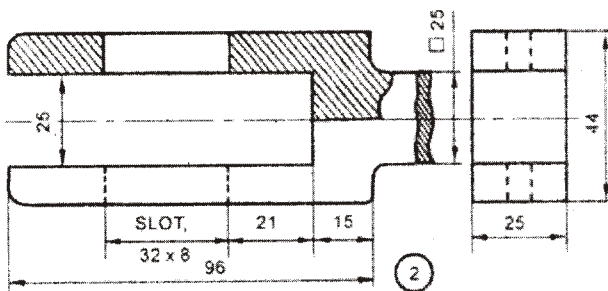
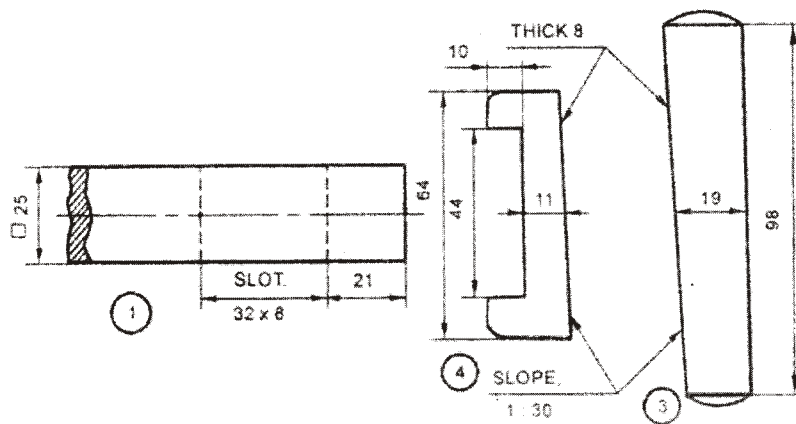
(2) Priority should be given to the accuracy, neatness and dimensioning.

5. Study the given part drawings of Cotter Joint with Gib.

Assemble the parts and draw :

25+15

- Half-sectional front view
- Top view



Parts list

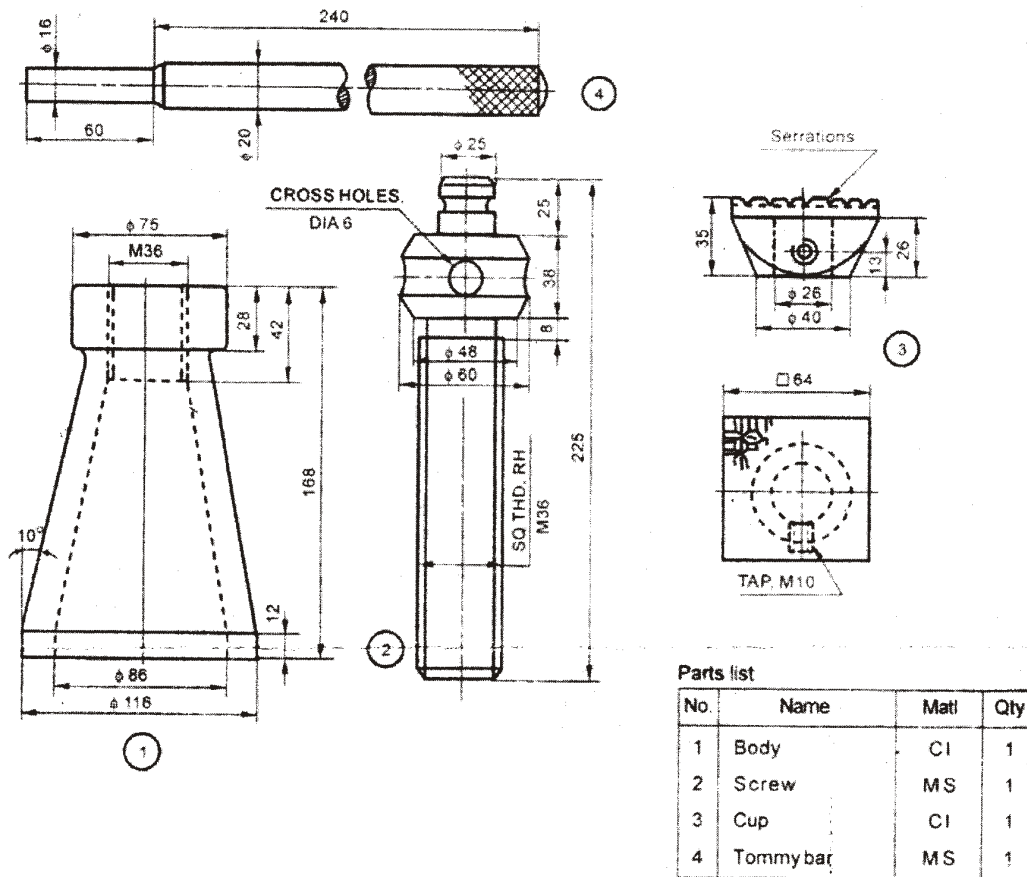
No.	Name	Matl	Qty
1	Rod end	MS	1
2	Fork end	MS	1
3	Cotter	FS	1
4	Gib	FS	1

COTTER JOINT WITH A GIB

6. Study the parts of given screw jack. Assemble the parts and draw : 25+15

(a) Half-sectional front view

(b) Right-side view



SCREW JACK
