



C09-M-307

3251

BOARD DIPLOMA EXAMINATION, (C-09)

MARCH/APRIL—2014

DME—THIRD SEMESTER EXAMINATION

MACHINE DRAWING

Time : 3 hours]

[Total Marks : 60

PART—A

5×4=20

Instructions : (1) Answer **all** questions.

(2) Each question carries **five** marks.

(3) Draw neatly (not to scale) and show the standard proportions.

1. Sketch the following nuts :

(a) Flanged nut

(b) Capstan nut

2. Sketch the following thread profile with proportions :

(a) Square

(b) Knuckle

3. Draw the symbols of the welded joints :

(a) Single-U butt weld

(b) Fillet weld

(c) Spot weld

(d) Seam weld

(e) Backing weld

* 4. Draw the following pipe fitting symbols :

- (a) Reducer
- (b) Globe valve
- (c) Check valve
- (d) Union joint
- (e) Plug

PART—B

40

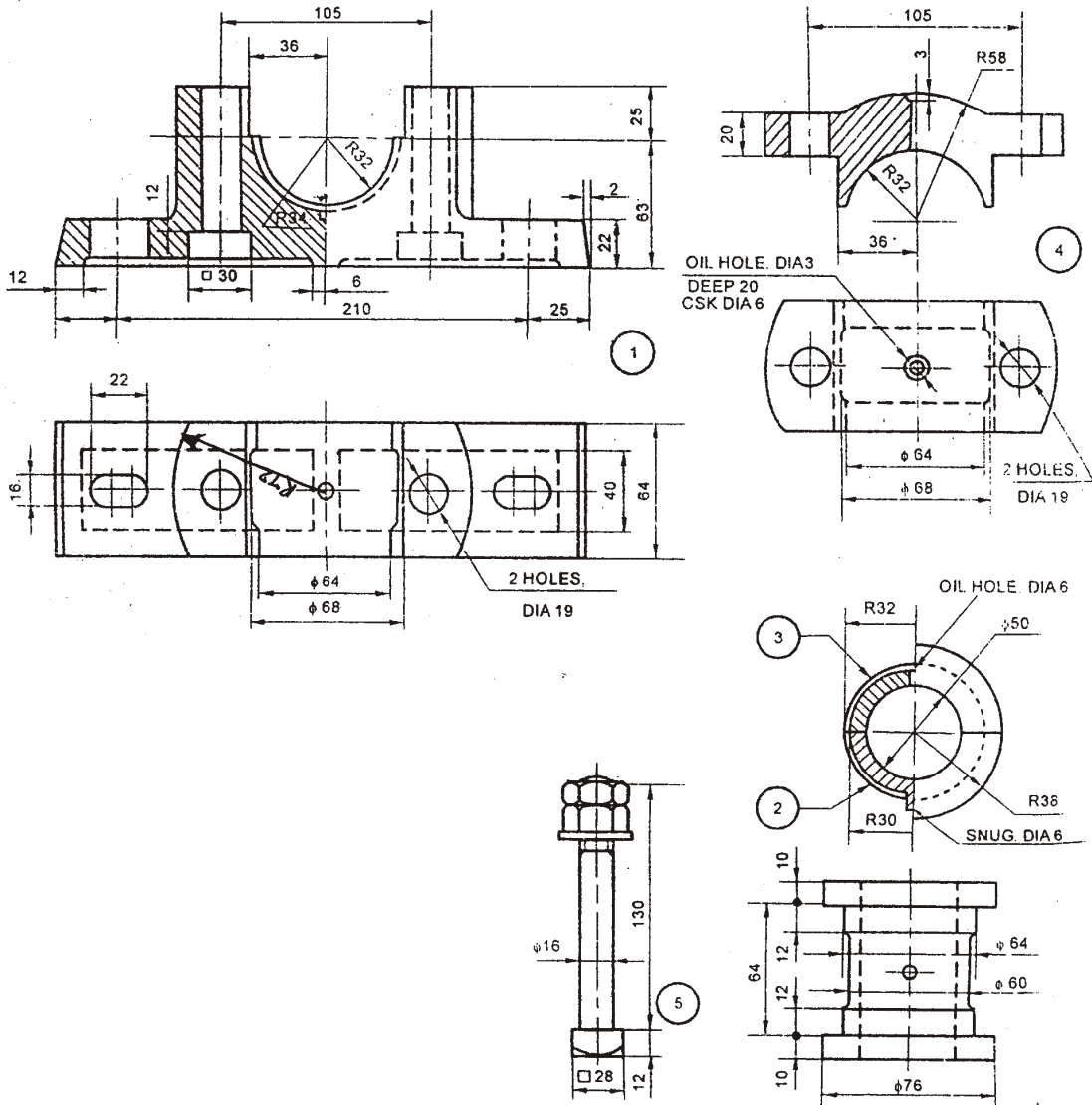
Instructions : (1) Answer *any one* question.
(2) Each question carries **forty** marks.
(3) All dimensions are in mm and assume missing dimensions, if any.

5. Assemble parts of the plumber block shown in the figure (Page 3). Draw the following views : 20+15+5=40

- (a) Half-sectional front view
- (b) Top view
- (c) Dimensioning

6. The details of steam engine cross head are shown in the figure (Page 4). Assemble the parts and draw the following views : 20+15+5=40

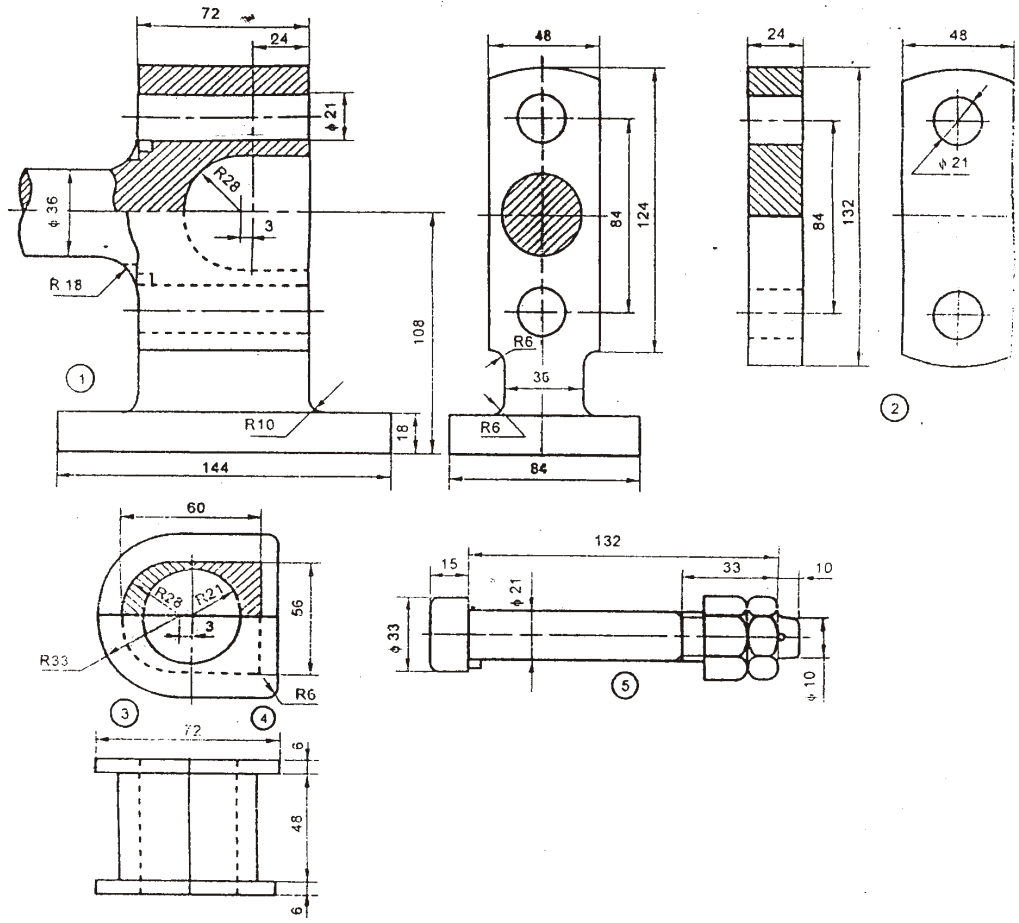
- (a) Half-sectional front view
- (b) Left-side view
- (c) Dimensioning



Plummer Block
Parts List

No.	Name	Material	Qty.
1	Base	CI	1
2	Bearing Brass	Bronze	1
3	Bearing Brass	Bronze	1
4	Cap	CI	1
5	Bolt with Nuts	MS	2

*



030 032

*