



C09-M/MET-307

3251

BOARD DIPLOMA EXAMINATION, (C-09)

SEPTEMBER/OCTOBER - 2020

DME—THIRD SEMESTER EXAMINATION

MACHINE DRAWING

Time : 3 hours]

[Total Marks : 60

PART—A

5×4=20

- Instructions :** (1) Answer **all** questions.
(2) Each question carries **five** marks.
(3) All dimensions are in mm.

1. Draw the following thread profiles with standard proportions :
 - (a) Whitworth thread
 - (b) Square thread
2. Draw the following rivet heads with suitable proportions :
 - (a) Cone head
 - (b) Round top countersunk head
3. Draw the conventional representations of the following pipe fittings :
 - (a) Cap
 - (b) Plug
 - (c) Tee
 - (d) 90° elbow
 - (e) Reducer
4. Show the weld symbols for the following :
 - (a) Single V-butt weld
 - (b) Single bevel-butt weld

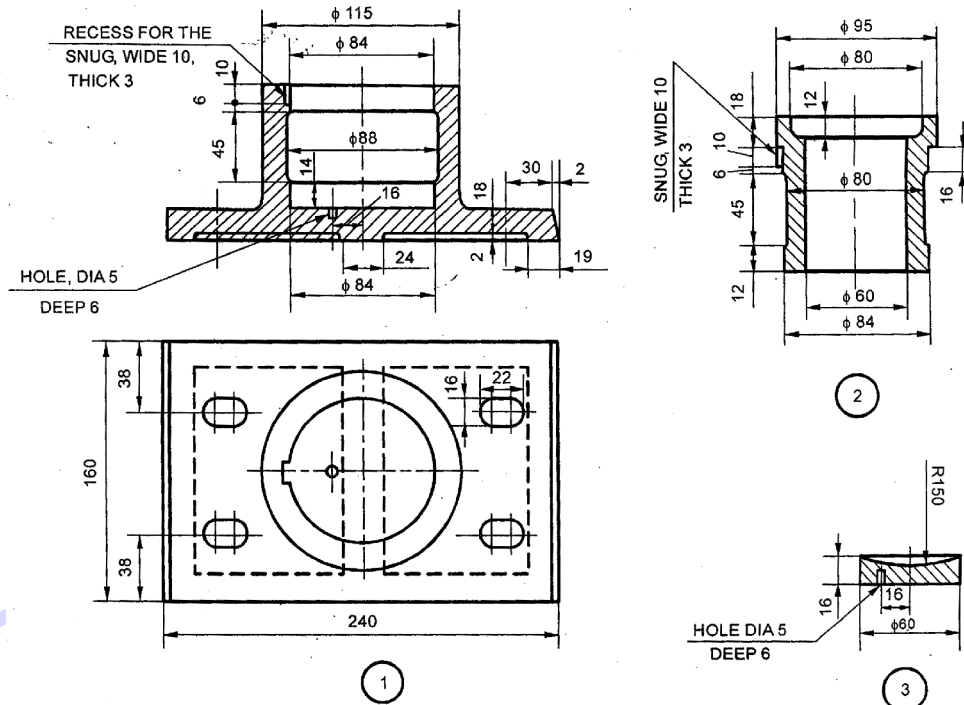
- (c) Single U-butt weld
- (d) Seam weld
- (e) Double V-butt weld

PART—B

40

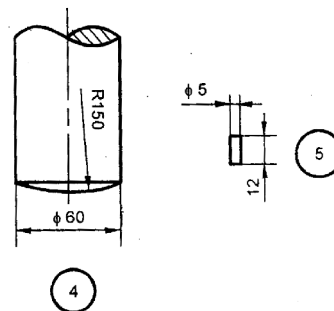
Instructions : (1) Answer *any one* question.
 (2) Each question carries **forty** marks.
 (3) All dimensions are in mm and choose suitable scale.

- 5.** Assemble the parts of footstep bearing shown below and draw the following views : 20+20
- (a) Sectional front view
 - (b) Top view



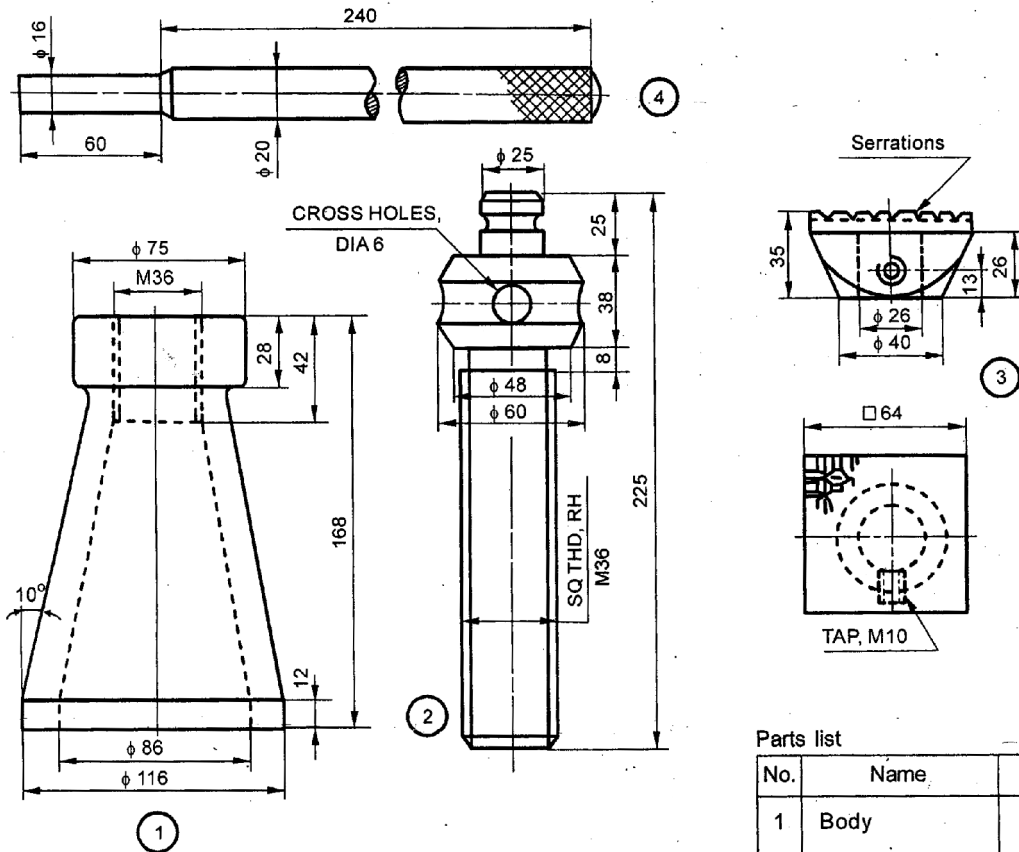
Parts List

No.	Name	Material	Qty
1	Body	Cast Iron	1
2	Bush	Brass	1
3	Disc	P Bronze	1
4	Shaft	Mild Steel	1
5	Pin	Mild Steel	1



6. Assemble the parts of screwjack shown below and draw the following : 20+20

- (a) Half-section front view
(b) Top view



Parts list

No.	Name	Matl
1	Body	CI
2	Screw	MS
3	Cup	CI
4	Tommy bar	MS
