



C14-CM-306/C14-IT-306

4236

**BOARD DIPLOMA EXAMINATION, (C-14)**  
**OCT/NOV—2018**  
**DCME—THIRD SEMESTER EXAMINATION**

RDBMS

Time : 3 hours ]

[ Total Marks : 80

---

**PART—A**

3×10=30

**Instructions** : (1) Answer **all** questions.

(2) Each question carries **three** marks.

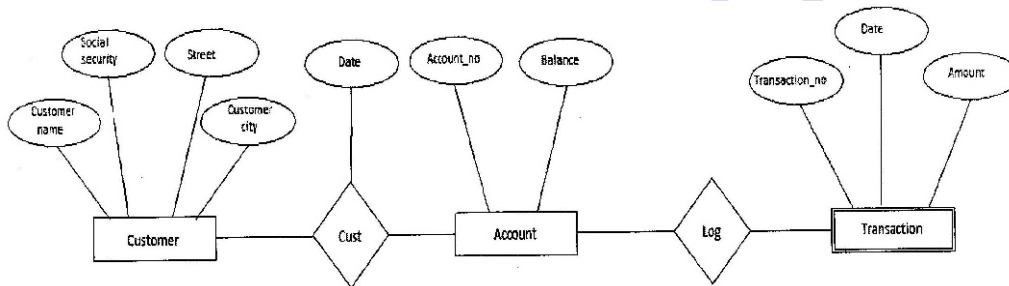
(3) Answers should be brief and straight to the point and shall not exceed *five* simple sentences.

1. Write the steps to reduce an entity set and relationship set in an ER diagram.
2. Define candidate key. Give an example.
3. What is the difference between 2 NF and 3 NF?
4. What are single-row functions? Classify.
5. Explain any three conversion functions with example.
6. List and explain any three pseudocolumns of SQL.
7. List the advantages of views.
8. Define null. Explain how to handle null in PL/SQL.
9. Define a trigger. List different types of trigger.
10. List the advantages of packages.

- Instructions :** (1) Answer *any five* questions.  
 (2) Each question carries **ten** marks.  
 (3) Answers should be comprehensive and the criterion for valuation is the content but not the length of the answer.

11. List and explain the features of DBMS.

12. Reduce the following ER diagram into tables :



13. List and explain any six data handling functions with example.

14. (a) Explain the steps involved in compiling an SQL program.

(b) List out five schema objects.

15. Explain the management of sequences in detail with respect to create, alter, use and drop sequences.

16. Explain user defined PL/SQL records, declaration and passing values to and from the data records.

17. (a) Explain how to re-raise an exception in PL/SQL.

(b) Distinguish between procedures and functions of PL/SQL.

18. Explain the purpose of each component of a package.

\*\*\*