

4429

BOARD DIPLOMA EXAMINATION, (C-14)

MARCH/APRIL-2019

DCE - FOURTH SEMESTER EXAMINATION

BUILDING SERVICES DRAWING

Time: 3 Hours

Max.Marks:60

PART-A

5x4=20M

Instructions: 1) Answer all questions. Each question carries Four marks.
2) Draw the sketches not to scale.
3) Assume suitable data wherever necessary.

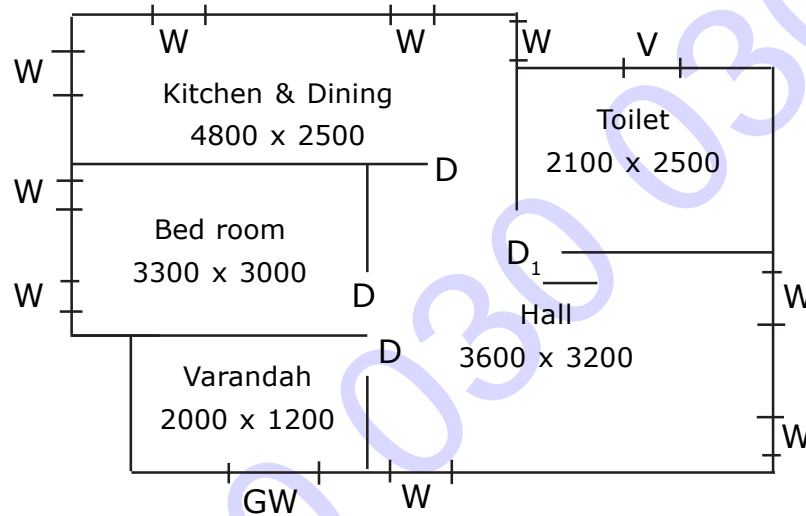
- 1) Draw the conventional signs for the following items:
 - a) European water closet
 - b) Indian type W.C
 - c) Wash basin
- 2) Draw the cross- section of a soak pit completely filled with aggregate and with partial lining.
- 3) Draw the electrical circuit diagram for one lamp controlled from two places using two way switches.
- 4) Draw the conventional signs for the following items:
 - a) Fire alarm push.
 - b) Thermostat.
 - c) Telephone instrument point internal.
 - d) Electric unit heater.
- 5) Draw symbols for:
 - a) Chiller
 - b) Pipe coil
 - c) Pump
 - d) Silencer

PART-B

2x20=40M

- Instructions:** 1) Answer all questions. Each question carries Twenty marks.
2) Any missing data may be suitably assumed .
3) The drawing must be to the scale.

6) Draw electrical wiring diagram in a single bed roomed residential building to a suitable scale for the line diagram as shown below.



All dimensions are in mm, all walls are 200mm thick in superstructure.

D = 1000mm x 2000mm, D1 = 750mm, x 1800mm,

W = 1000mm x 1200mm, V = 600mm x 450mm Electrical fittings.

Outside the verandah = 1 Fan; 1Lamp; 1 Tube Light 5Amp.

Socket outlet.

In the hall = 1Fan; 1 Lamp; 1Tube light, Bell point; 2No. 5Amp. Socket outlets.

In Bed room = 1Fan; 1 Lamp; 1Tube light one 5Amp. Socket outlet.

In kitchen & Dining = 1 Fan; 2 Lamps; 1 Tube light, 1 Exhaust Fan; 2 No. 5Amp. Socket outlets; one 15 Amp. Socket outlet

In Bath & Toilet = 1Lamp; 1Exhaust Fan one 15Amp. Socket outlet.

7) Draw the plan of ducting air conditioning system for a mini Theater/ auditorium.

* * *