

*



C14-C-307

4231

BOARD DIPLOMA EXAMINATION, (C-14)

MARCH/APRIL—2021

DCE - THIRD SEMESTER EXAMINATION

CIVIL ENGINEERING DRAWING - I

Time : 3 hours]

[Total Marks : 60

PART—A

5×4=20

- Instructions :**
- (1) Answer *any four* questions.
 - (2) Each question carries **five** marks.
 - (3) Need *not* be drawn to scale.
 - (4) Any missing data may be assumed suitably.

1. Draw the conventional signs for the following :
 - (a) European water closet
 - (b) ceiling fan
2. Draw the elevation of fully glazed window and label the parts.
3. Draw the electrical layout drawing for a two-roomed building with all necessary electrical fittings.
4. Sketch the plans of odd course and even course of one brick wall of English bond meeting at corner.
5. Draw the line diagram, showing functional requirements of a primary school for 5 classrooms.
6. State the best locations of the following rooms as per building by-laws :
 - (a) puja room
 - (b) kitchen
7. What is setback?

PART—B

20+20=40

- Instructions :** (1) Answer **all** questions.
 (2) The drawing must be to the scale.
 (3) Any missing data may be assumed suitably.

8. A line diagram showing the arrangement of a building is shown in fig. 1 (given below). Draw a fully dimensional detailed plan to a scale of 1 : 50. Schedule of doors, windows, ventilators and cupboard is as given in the following table : (All dimensions are in mm)

D_1	1000 × 2000	Flushed door
D_2	900 × 2000	Flushed door
W_1	1200 × 1500	Glazed window
W_2	1000 × 1500	Glazed window
V	1000 × 600	Glazed ventilator

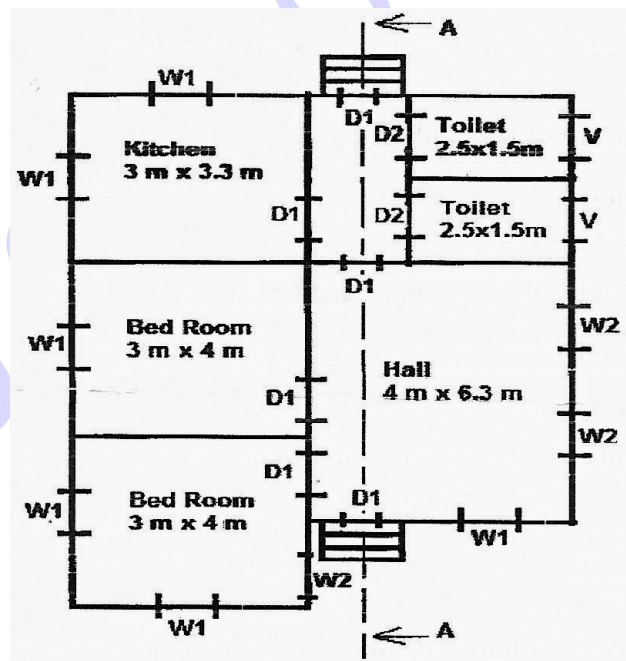


Fig. 1

OR

9. Draw the cross-section of load bearing wall, and name all components below and above ground level.

*

10. Draw the line diagram for a proposed hostel for 200 students to a suitable scale.

OR

11. Draw the line diagram showing the functional requirements of a rural hospital building for 10 bed capacity.

★ ★ ★

030 030 030 030 030

*