



c09-c-107

**3017**

**BOARD DIPLOMA EXAMINATION, (C-09)**

**MARCH/APRIL—2014**

**DCE—FIRST YEAR EXAMINATION**

**ENGINEERING DRAWING**

*Time : 3 hours ]*

*[ Total Marks : 60*

---

**PART—A**

5×4=20

**Instructions :** (1) Answer **all** questions.

(2) Each question carries **five** marks.

(3) All dimensions are in mm.

1. Print the following in capital, 12 mm size, inclined lettering :  
“CONTROL ENVIRONMENTAL POLLUTION”

2. Construct a pentagon of side 30 mm.

3. Redraw the following Fig. 1 to suitable scale as per Indian standards :

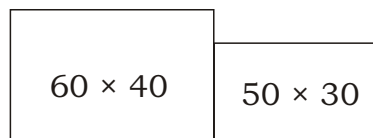


Fig. 1

- \* 4. Draw an auxiliary end view for the views shown in Fig. 2 below :

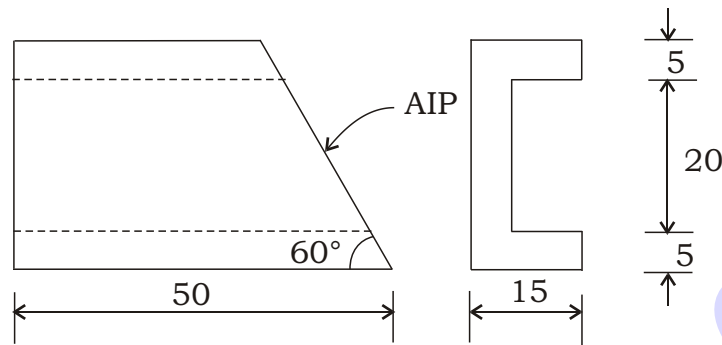


Fig. 2

**PART—B**

10×4=40

**Instructions :** (1) Answer *any four* questions.

(2) Each question carries **ten** marks.

(3) All dimensions are in mm.

5. Draw a helix of pitch 50 mm on a cylinder of diameter 60 mm and also draw the development of helix.

6. Draw the following orthographic views of the block shown pictorially in the following Fig. 3 :

(a) Front view, (b) Top view and (c) Right-side view

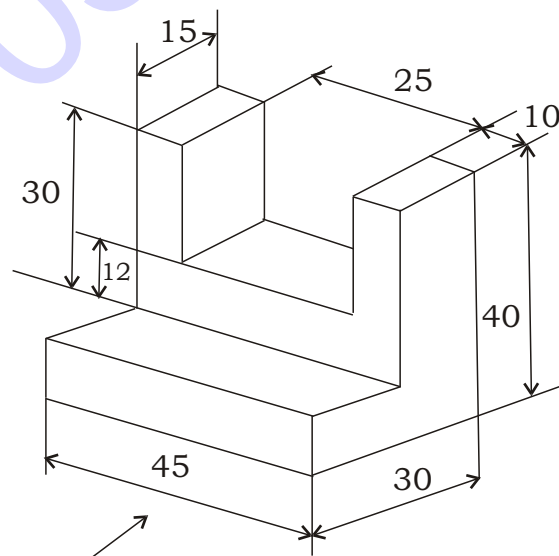


Fig. 3

\*

7. Draw the isometric view of the model, three views of which are shown below in Fig. 4 :

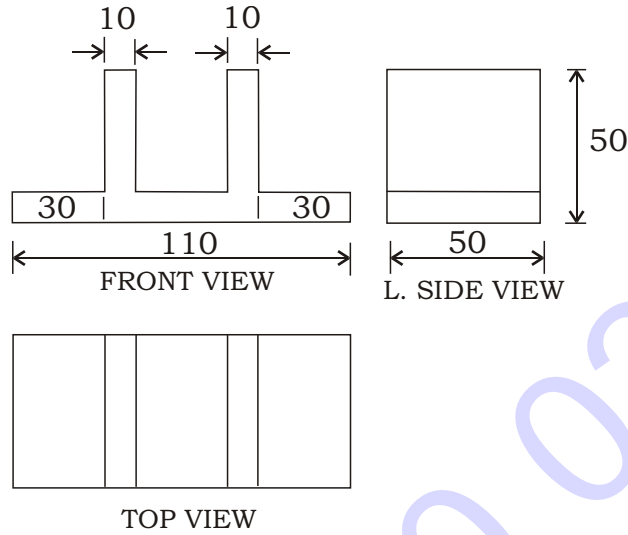


Fig. 4

8. Draw the development of the lateral surface of the part "A" of hexagonal pyramid shown in Fig. 5 :

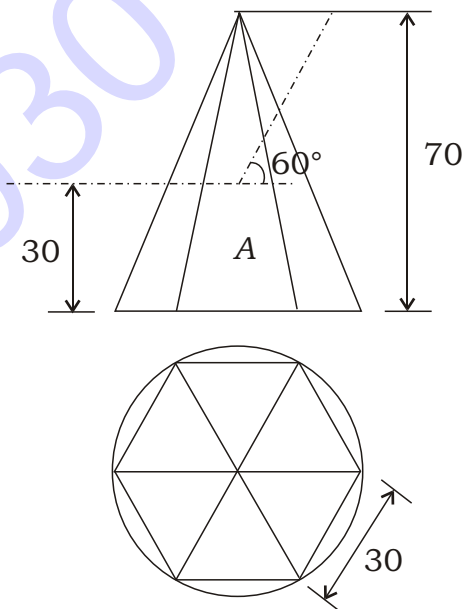


Fig. 5

\*

9. Draw the sectional front view and top view of the object shown below in Fig. 6 :

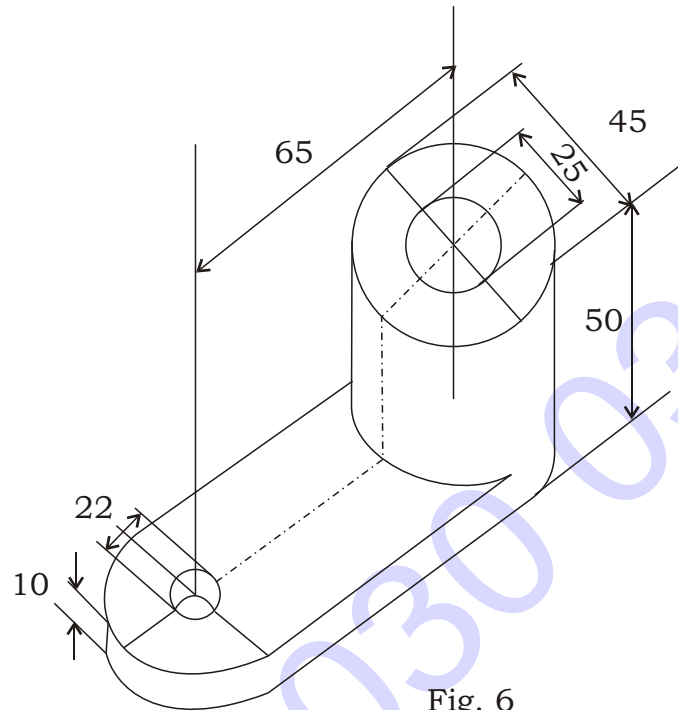


Fig. 6

10. A rectangle  $ABCD$  of size 60 mm  $\times$  30 mm has its shorter edge on HP. Its longer edge is inclined at  $40^\circ$  to VP. Its surface is inclined at  $30^\circ$  to HP. Draw its projections.

\*\*\*

\*